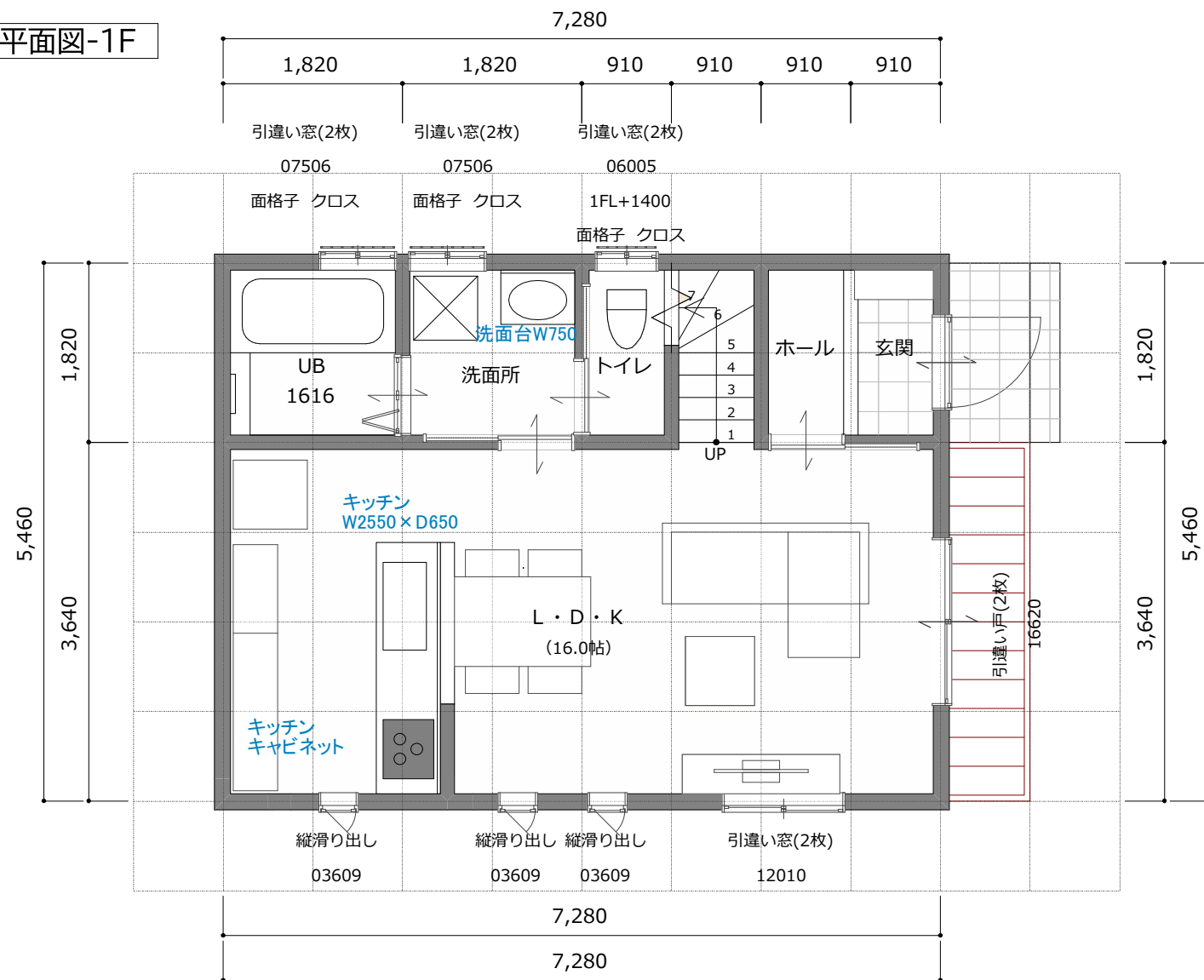
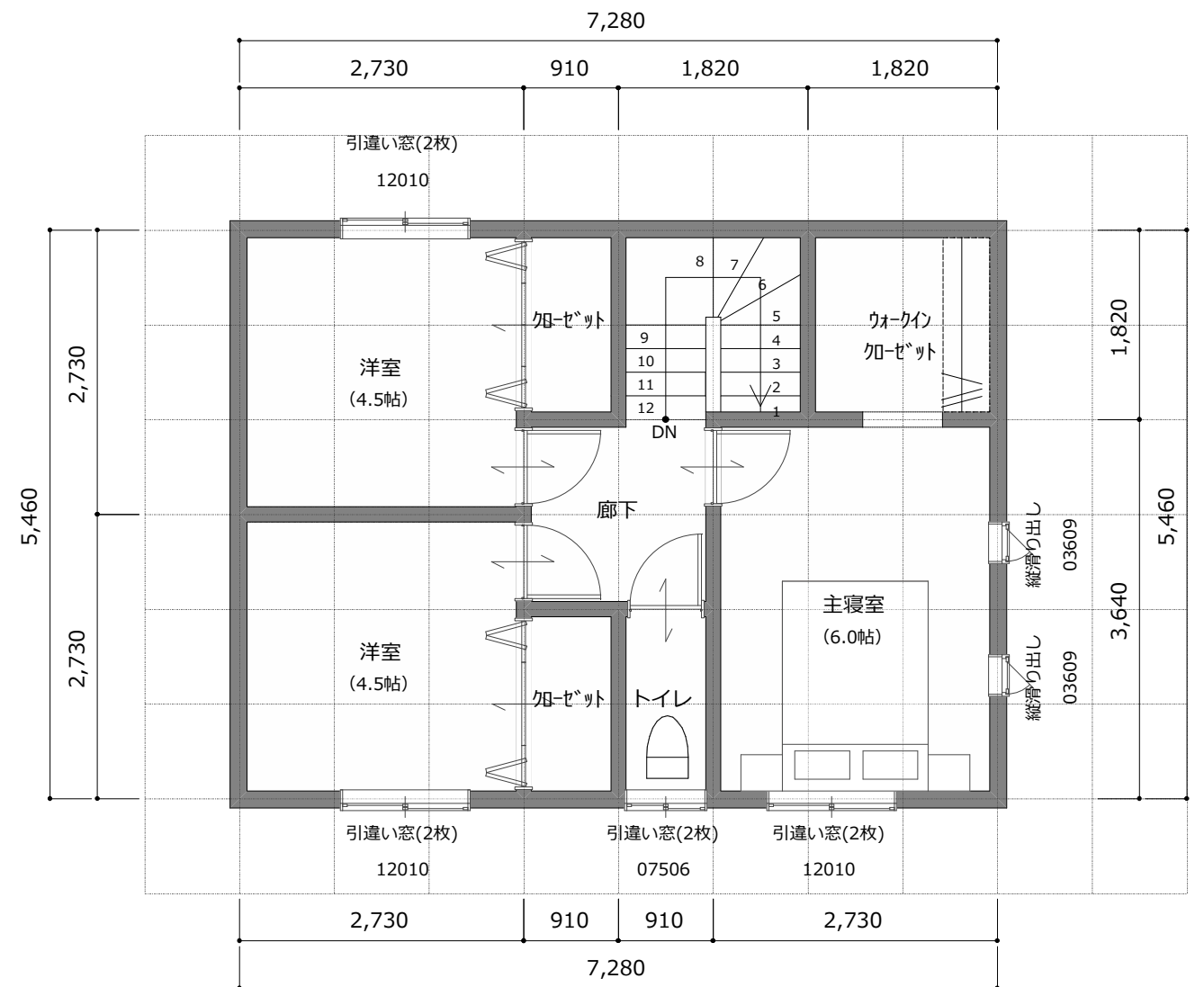


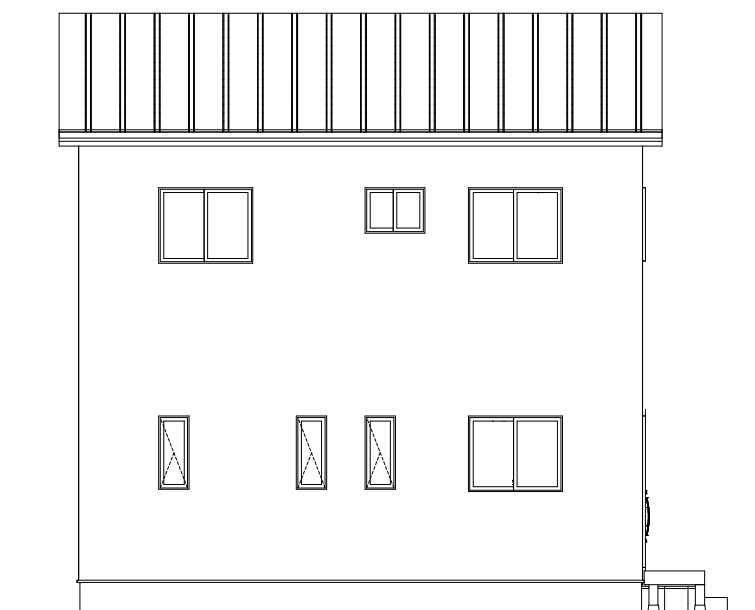
平面図-1F



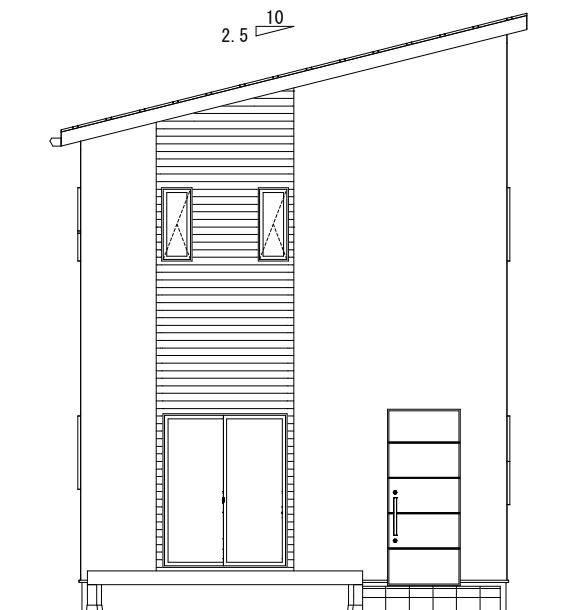
平面図-2F



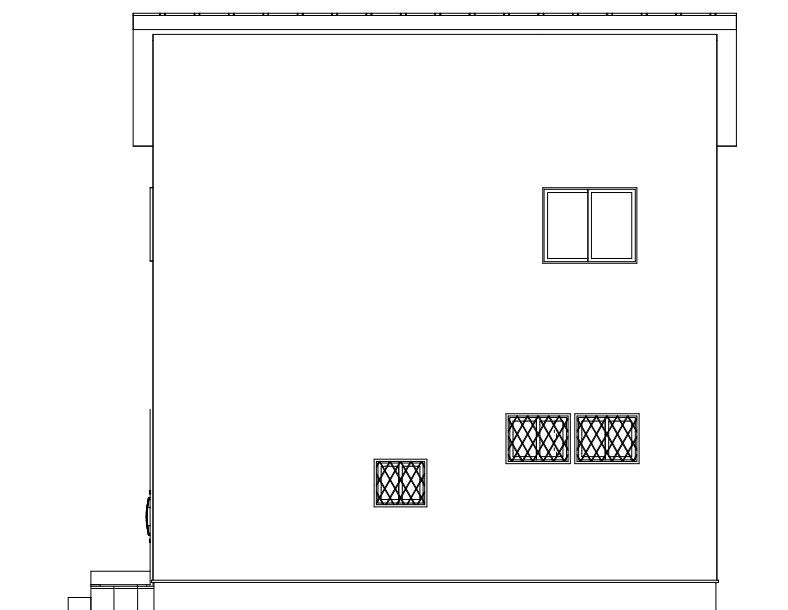
立面図-南



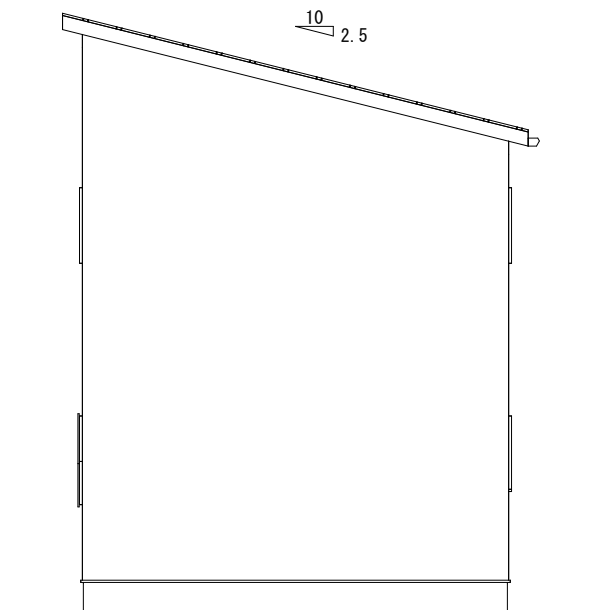
立面図-東



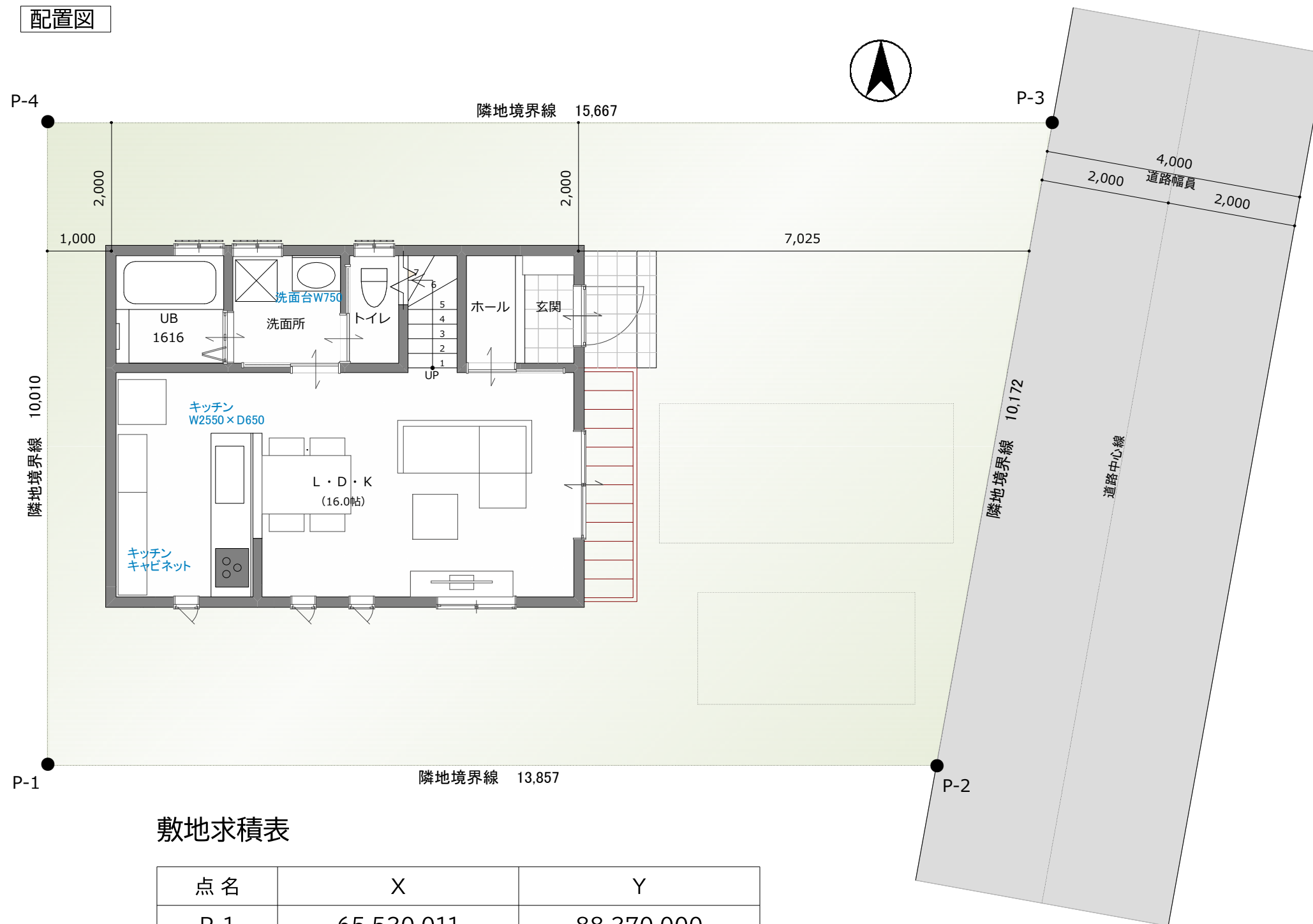
立面図-北



立面図-西



配置図



[MEMO]

敷地求積表

点 名	X	Y
P-1	65,520.011	88,270.000
P-2	79,376.811	88,270.000
P-3	81,186.011	98,280.000
P-4	65,520.011	98,280.000
$\Sigma Y_n (X_{n+1} - X_{n-1}) = 295.6313360$		
面積(1/2)m ² 147.81		

